

QNavigator User Guide

GSM/GPRS/UMTS/HSPA Module Series

Version: 1.5

Date: 2024-01-16

Status: Released



At Quectel, our aim is to provide timely and comprehensive services to our customers. If you require any assistance, please contact our headquarters:

Quectel Wireless Solutions Co., Ltd.

Building 5, Shanghai Business Park Phase III (Area B), No.1016 Tianlin Road, Minhang District, Shanghai 200233, China

Tel: +86 21 5108 6236

Email: info@quectel.com

Or our local offices. For more information, please visit:

<http://www.quectel.com/support/sales.htm>.

For technical support, or to report documentation errors, please visit:

<http://www.quectel.com/support/technical.htm>.

Or email us at: support@quectel.com.

Legal Notices

We offer information as a service to you. The provided information is based on your requirements and we make every effort to ensure its quality. You agree that you are responsible for using independent analysis and evaluation in designing intended products, and we provide reference designs for illustrative purposes only. Before using any hardware, software or service guided by this document, please read this notice carefully. Even though we employ commercially reasonable efforts to provide the best possible experience, you hereby acknowledge and agree that this document and related services hereunder are provided to you on an “as available” basis. We may revise or restate this document from time to time at our sole discretion without any prior notice to you.

Use and Disclosure Restrictions

License Agreements

Documents and information provided by us shall be kept confidential, unless specific permission is granted. They shall not be accessed or used for any purpose except as expressly provided herein.

Copyright

Our and third-party products hereunder may contain copyrighted material. Such copyrighted material shall not be copied, reproduced, distributed, merged, published, translated, or modified without prior written consent. We and the third party have exclusive rights over copyrighted material. No license shall be granted or conveyed under any patents, copyrights, trademarks, or service mark rights. To avoid ambiguities, purchasing in any form cannot be deemed as granting a license other than the normal non-exclusive, royalty-free license to use the material. We reserve the right to take legal action for noncompliance with abovementioned requirements, unauthorized use, or other illegal or malicious use of the material.

Trademarks

Except as otherwise set forth herein, nothing in this document shall be construed as conferring any rights to use any trademark, trade name or name, abbreviation, or counterfeit product thereof owned by Quectel or any third party in advertising, publicity, or other aspects.

Third-Party Rights

This document may refer to hardware, software and/or documentation owned by one or more third parties ("third-party materials"). Use of such third-party materials shall be governed by all restrictions and obligations applicable thereto.

We make no warranty or representation, either express or implied, regarding the third-party materials, including but not limited to any implied or statutory, warranties of merchantability or fitness for a particular purpose, quiet enjoyment, system integration, information accuracy, and non-infringement of any third-party intellectual property rights with regard to the licensed technology or use thereof. Nothing herein constitutes a representation or warranty by us to either develop, enhance, modify, distribute, market, sell, offer for sale, or otherwise maintain production of any our products or any other hardware, software, device, tool, information, or product. We moreover disclaim any and all warranties arising from the course of dealing or usage of trade.

Privacy Policy

To implement module functionality, certain device data are uploaded to Quectel's or third-party's servers, including carriers, chipset suppliers or customer-designated servers. Quectel, strictly abiding by the relevant laws and regulations, shall retain, use, disclose or otherwise process relevant data for the purpose of performing the service only or as permitted by applicable laws. Before data interaction with third parties, please be informed of their privacy and data security policy.

Disclaimer

- a) We acknowledge no liability for any injury or damage arising from the reliance upon the information.
- b) We shall bear no liability resulting from any inaccuracies or omissions, or from the use of the information contained herein.
- c) While we have made every effort to ensure that the functions and features under development are free from errors, it is possible that they could contain errors, inaccuracies, and omissions. Unless otherwise provided by valid agreement, we make no warranties of any kind, either implied or express, and exclude all liability for any loss or damage suffered in connection with the use of features and functions under development, to the maximum extent permitted by law, regardless of whether such loss or damage may have been foreseeable.
- d) We are not responsible for the accessibility, safety, accuracy, availability, legality, or completeness of information, advertising, commercial offers, products, services, and materials on third-party websites and third-party resources.

Copyright © Quectel Wireless Solutions Co., Ltd. 2024. All rights reserved.

About the Document

Revision History

Revision	Date	Author	Description
1.0	2012-01-08	Clare CHEN	Initial
1.1	2013-08-01	Karen REN/ Yolanda YAO/ Harvey HE	1. Added the QuecLocator test function. 2. Updated Figures and their corresponding description. 3. Added QNavigator installation's user guide.
1.2	2014-01-07	Lucky DOU/ Dishon ZHOU	Added the UMTS/HSPA function.
1.3	2015-03-27	Hunter LV	Updated QNavigator Version to 1.4
1.4	2016-03-25	Hunter LV	Updated QNavigator Version to 1.5
1.5	2024-01-16	Sun XIA	1. Updated QNavigator version to 1.6. 2. Added a note (Chapter 1). 3. Updated the figures (Chapter 2). 4. Updated the description of step 5 (Chapter 2.1). 5. Updated the "OVER" button to "End" button for hanging up the call (Chapter 4.3). 6. Added the terms and abbreviations (Chapter 6).

Contents

About the Document	3
Contents	4
Table Index	5
Figure Index	6
1 Introduction	7
1.1. Supported OS	7
2 Software Interface	9
2.1. User Guidance	9
2.2. The Main Software Interface	13
2.3. Toolbar	14
2.4. Menu Bar	15
3 Main Parameter Configuration	16
3.1. UART Parameter Setting	16
3.2. System Parameter Setting	17
4 Brief Introduction	18
4.1. Home Page	18
4.2. SMS	19
4.3. Voice Call	21
4.4. TCP/UDP	23
4.5. PPP	26
4.6. QuecLocator	27
4.7. GNSS	28
4.8. AT Command	30
4.9. QCOM	34
5 Auxiliary Tools	35
5.1. Manually Send Data to UART	35
6 Appendix References	37

Table Index

Table 1: Introduction of Icon Button	14
Table 2: Introduction of Submenu of Tool.....	15
Table 3: Introduction of System Parameters.....	17
Table 4: Functions of SMS	20
Table 5: Terms and Abbreviations	37

Figure Index

Figure 1: Select the Properties.....	8
Figure 2: Run This Program as an Administrator.....	8
Figure 3: Welcome to Use QNavigator	9
Figure 4: Select the Module Type	10
Figure 5: Connect to EVB	10
Figure 6: Serial Port Setting	11
Figure 7: Connect to Module.....	12
Figure 8: Serial Port Parameter Configuration.....	12
Figure 9: Main Interface	13
Figure 10: Toolbar	14
Figure 11: Submenu of Tool	15
Figure 12: UART Parameter Setting	16
Figure 13: System Parameter Setting.....	17
Figure 14: Home Page	18
Figure 15: Switch View.....	19
Figure 16: SMS-Read All.....	20
Figure 17: SMS-Send Message.....	21
Figure 18: MO Call	22
Figure 19: MT Call.....	23
Figure 20: TCP/UDP-PDP ACT	24
Figure 21: TCP/UDP-Connect.....	25
Figure 22: TCP/UDP-Send.....	25
Figure 23: PPP-DIAL.....	26
Figure 24: PPP-Terminate.....	27
Figure 25: Show in Map	28
Figure 26: Show in Map	29
Figure 27: Satellite Signal State.....	29
Figure 28: Show NMEA Data	30
Figure 29: AT Command-1	31
Figure 30: AT Command-2	32
Figure 31: AT Command-3	33
Figure 32: AT Command-4	33
Figure 33: QCOM Test Page.....	34
Figure 34: Hand Control.....	35
Figure 35: Hand Control-AT Command Edit/Select	36

1 Introduction

This user guide provides a guidance of using the QNavigator tool (taking QNavigator_V1.5 as an example) step-by-step.

QNavigator tool is only used to test Quectel modules. By using this tool, you can be familiar with the working process of main functions like Call, SMS, TCP/UDP, PPP and QuecLocator even when you do not know any AT commands. It will show you the details of how each function works. Referenced documents can be found in the “**Help**” menu of the Toolbar.

This document is applicable to all GSM and UMTS modules.

NOTE

The QNavigator tool is not supported by all modules, and some modules do not support all of its functions. This document is for reference only and please contact Quectel Technical Support for details.

1.1. Supported OS

The tool can work with the OS of PC as follows:

- Windows XP
- Windows 7
- Windows 8
- Windows Vista
- Windows 10

If the tool is installed on Windows 7 or Vista, please first select “**Properties**” -> “**Compatibility**” and then click “**Run this program as an administrator**” before using it. The detailed procedure is shown as below:

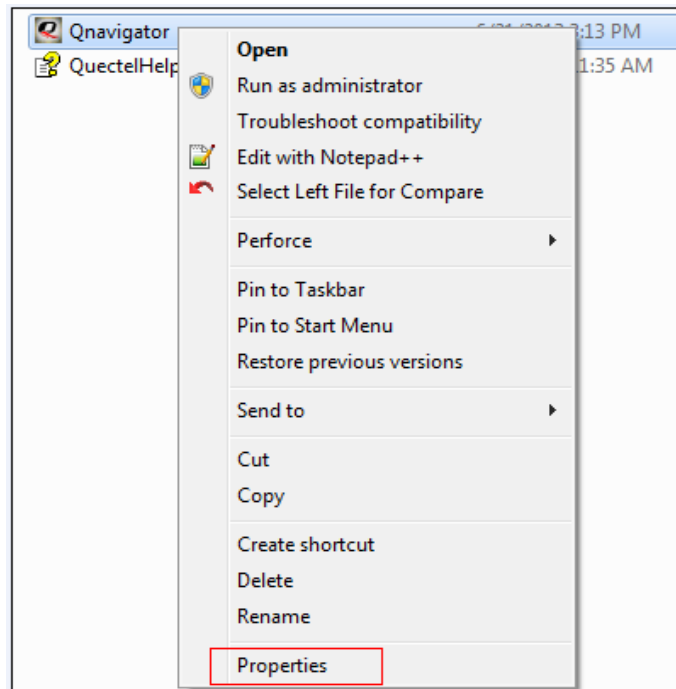


Figure 1: Select the Properties

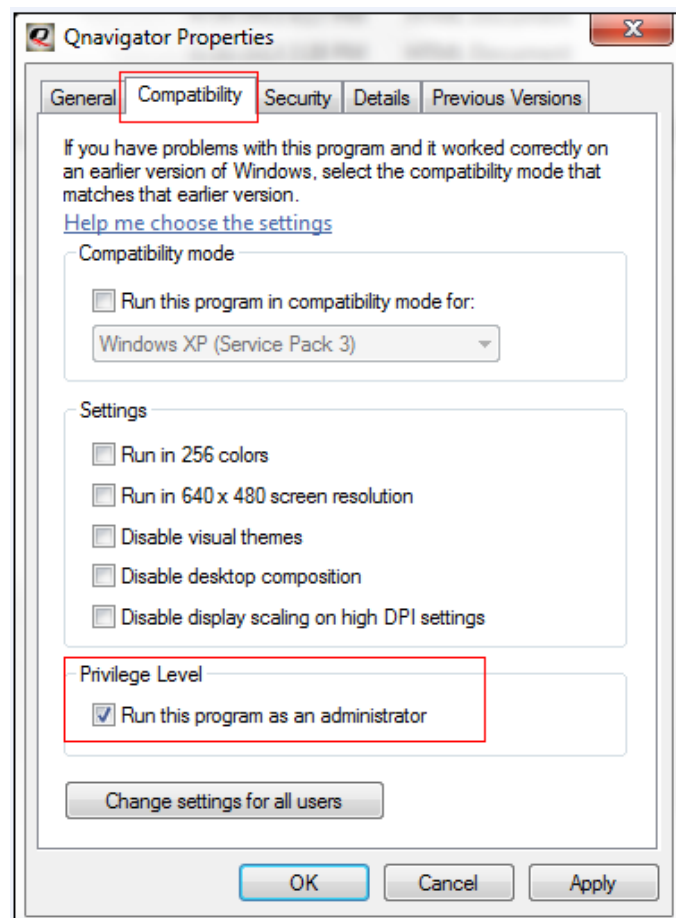


Figure 2: Run This Program as an Administrator

2 Software Interface

2.1. User Guidance

If it is the first time to use this software, the user guidance would pop up as below. You can also click “ESC” button on the keyboard to skip it.

Step 1: Click the “Next” button to enter the next step.



Figure 3: Welcome to Use QNavigator

Step 2: Choose the right module and click the “Next” button to enter the next step.



Figure 4: Select the Module Type

Step 3: Click the “Next” button to enter the next step. You can also click the “Prev” button to go back to the previous step.



Figure 5: Connect to EVB

Step 4: Click the “**Next**” button to enter the next step. You can also click the “**Prev**” button to go back to the previous step.



Figure 6: Serial Port Setting

Step 5: Click the “**Start**” button to run the tool. You can also click the “**Prev**” button to go back to the previous step.

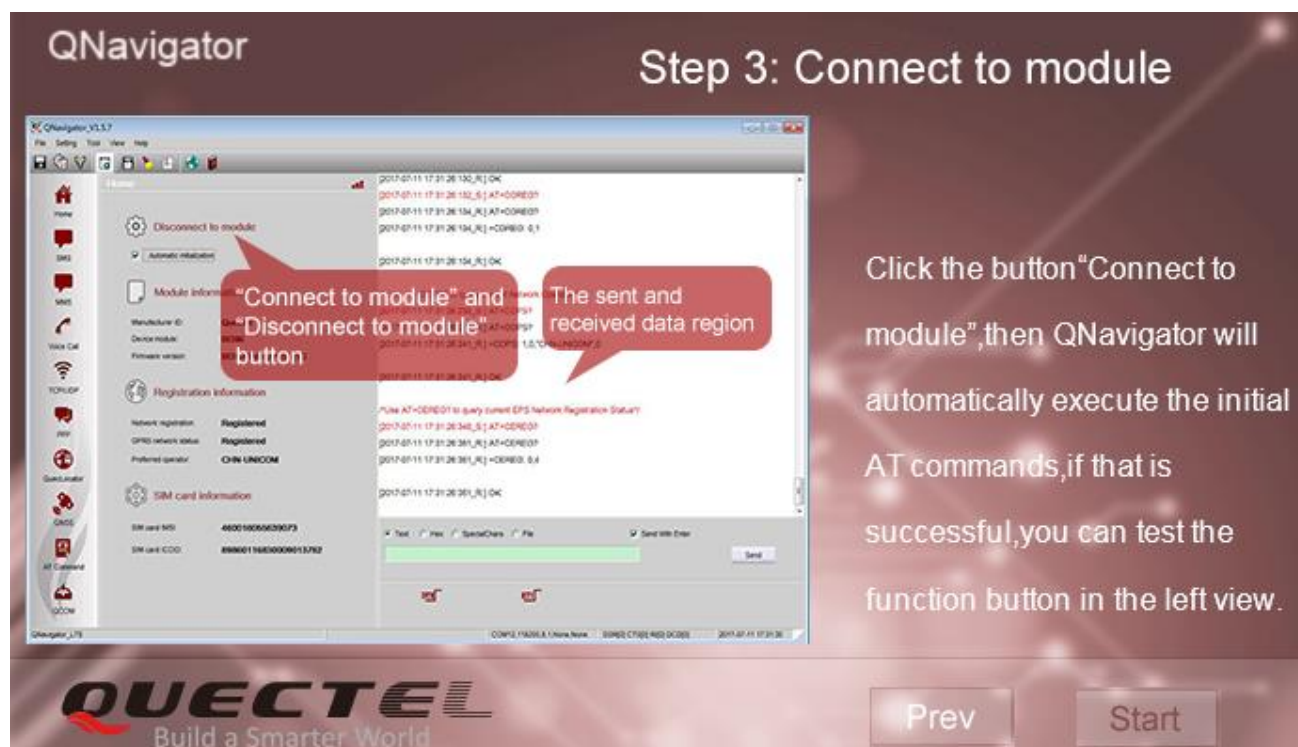


Figure 7: Connect to Module

Enter the homepage on the tool interface, select the **"Serial port parameter set"** on the tool interface as shown in the following figure.



Figure 8: Serial Port Parameter Configuration

Click the **"OK"** button to enter the main interface after parameter settings are completed.

NOTE

The user guidance can be found again by clicking **"Help"** -> **"Guidance"** button in the Menu.

2.2. The Main Software Interface

Enter the program interface shown as below:

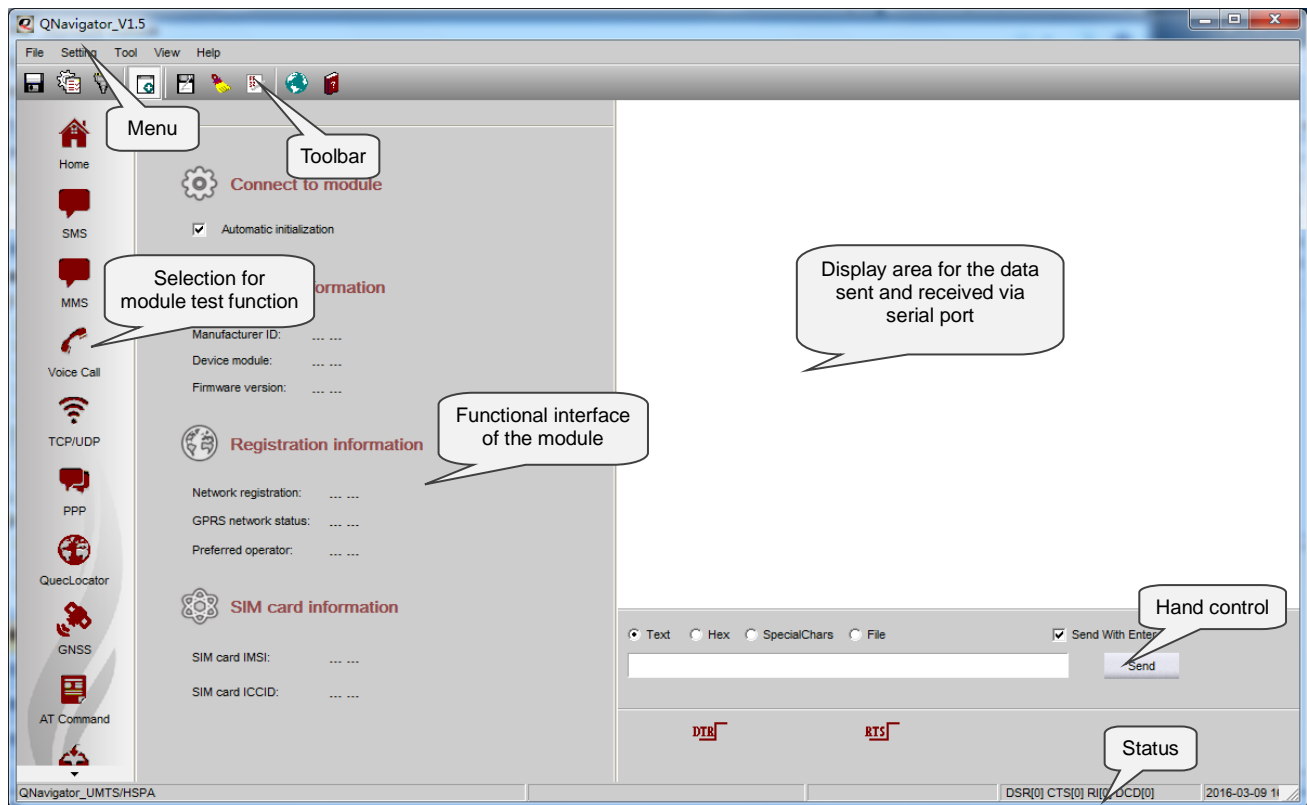


Figure 9: Main Interface

The main interface of the program contains seven parts: Menu, Toolbar, Selection for module test function, Functional interface of the module test, Display area for the data sent and received via serial port, Status and Hand control.










2.3. Toolbar

The Toolbar provides operation buttons for convenience and there is corresponding operation in the menu.



Figure 10: Toolbar

Table 1: Introduction of Icon Button

	Save the editable parameter after modification
	System parameters setting, including the size of main window, color of sent and received data, and the log file
	UART parameter setting (it is not allowed if UART has opened)
	Manually sending data interface displayed in the lower right part of the main interface
	Save the current data in display area
	Empty the current data in display area
	Display current data in HEX mode
	Open http://www.quectel.com
	Pop-up documentation window

2.4. Menu Bar

Here is the introduction on submenu of tool, as shown in the following figure (The operations shown in the menu are mainly used to assist testing).

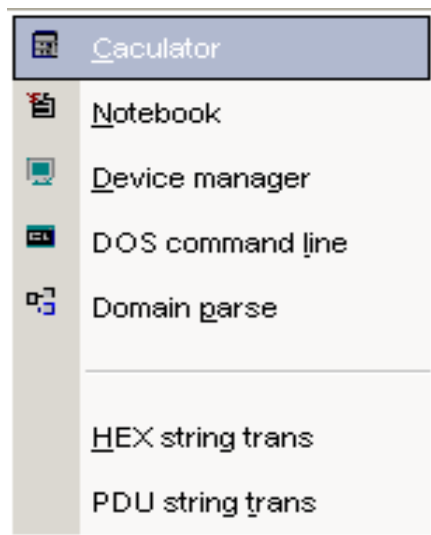


Figure 11: Submenu of Tool

Table 2: Introduction of Submenu of Tool

<u>C</u>alculator	Open the calculator of the operating system
<u>N</u>otebook	Open a Notepad program
<u>D</u>evice Manager	Open the Device Manager of the operating system where the port can be checked
DOS command line	Open a DOS command line window
Domain parse	Convert Domain name into IP address
<u>H</u>EX string trans	The conversion between ACSII character and HEX string, as well as Chinese character and UNICODE character
PDU string trans	Generate the PDU strings of SMS content

3 Main Parameter Configuration

Necessary parameters must be configured correctly before taking a test.

3.1. UART Parameter Setting

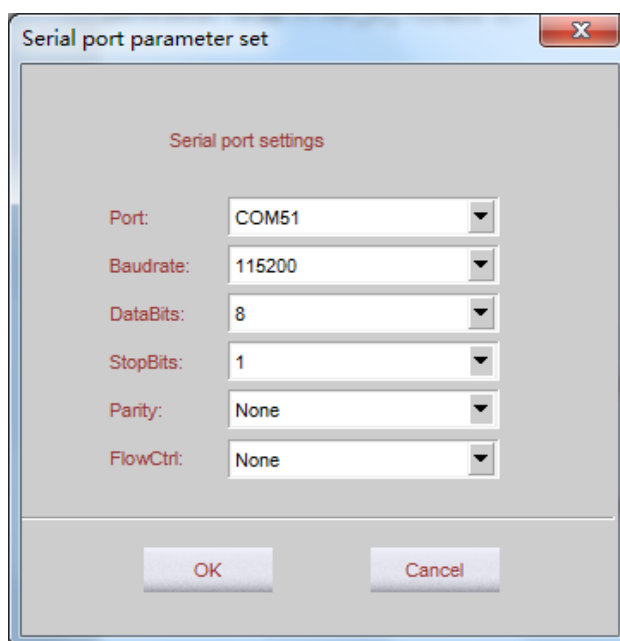


Figure 12: UART Parameter Setting

Before testing, necessary parameters must be configured first, including Port Number/Baud Rate/Data Bits/Stop Bits/Parity/Flow Control. Each time you click the drop-down box and select a new one, the information of current UART would be automatically updated by system.

3.2. System Parameter Setting

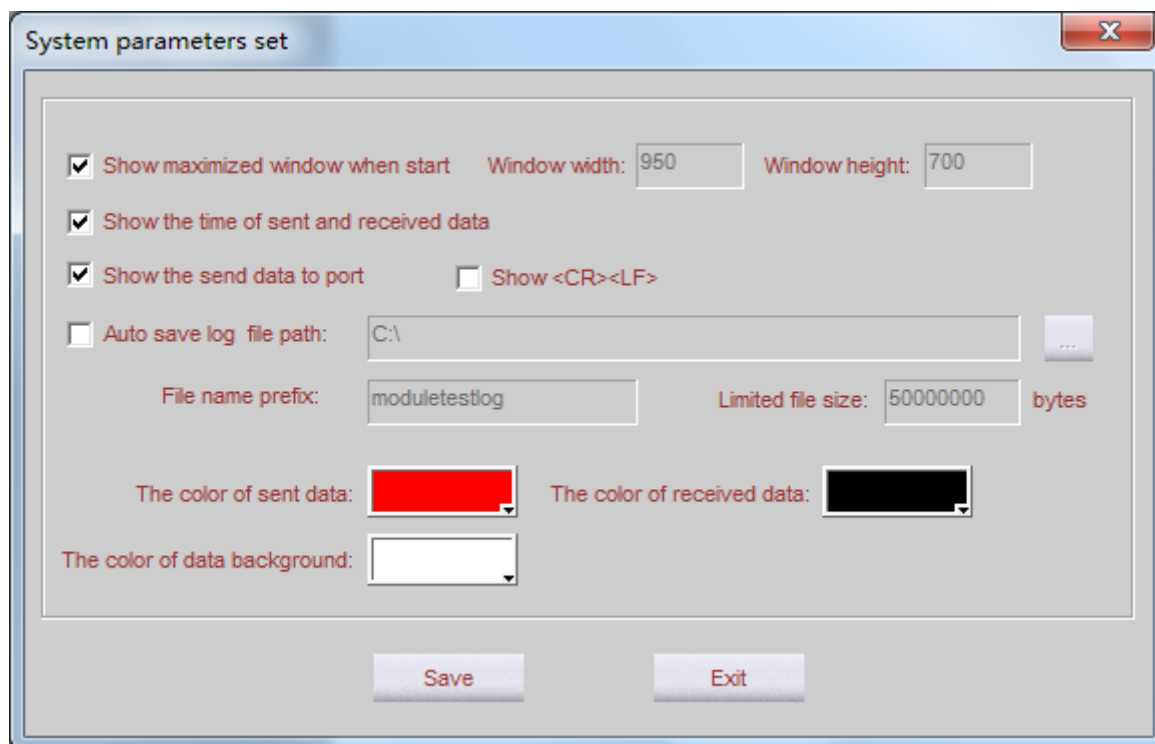


Figure 13: System Parameter Setting

Table 3: Introduction of System Parameters

Show maximized window when start	If this option has been chosen, the main window would display in maximal size. The size of the window depends on the value of the width and height of text boxes (If the value in these two boxes is too small, the size of the main window would just show all the information automatically).
Show the time of sent and received data	If this option has been chosen, time information would be displayed for each sent or received data.
Show the sent data to port	If this option has been chosen, the data sent to port will be displayed.
Auto save log file path	If this option has been chosen, the data that have been sent and received would be saved into a text file automatically. You can set the log file name, file path and limited file size.

4 Brief Introduction

QNavigator has the following functions: Home Page, SMS, Voice Call, TCP/UDP, PPP, QuecLocator, GNSS, AT Command and QCOM. Click the menu to switch to the appropriate page.

4.1. Home Page

It will automatically go to Home Page after running the software, as shown below:

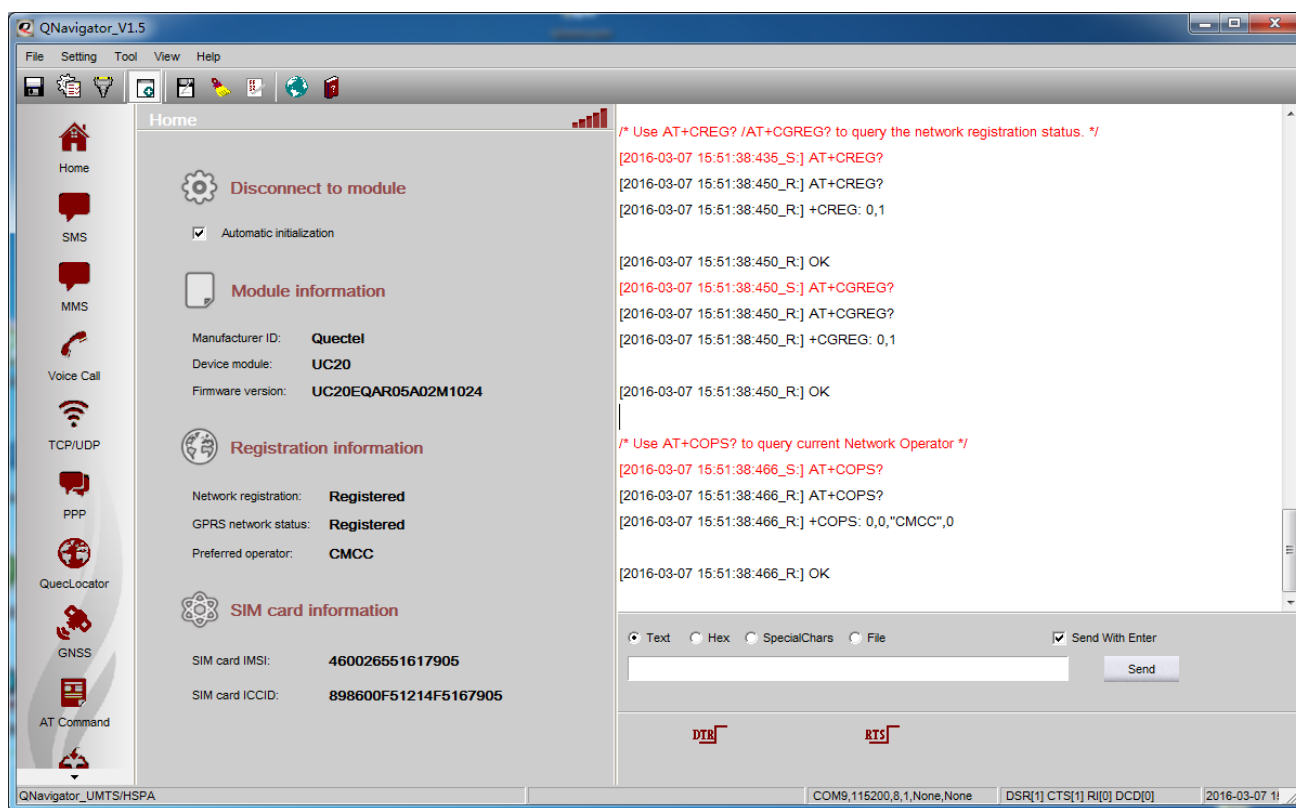


Figure 14: Home Page

Module can be connected by clicking the “**Connect to module**” button (which turns to “**Disconnect to module**” after it is clicked). It will go to initialization progress. “**Automatic initialization**” option is selected by default.

NOTE

Module initialization process includes querying the baud rate, version number, SIM card status, signal quality, network registration status and network operator.

4.2. SMS

SMS function is used to test SMS messages which have been sent and received under various modes, as well as read, and delete SMS messages in the SIM card.

The program will automatically check the network status to ensure the SMS function can work normally. The SMS function can be executed once the module has been connected with PC successfully. Then you will enter into the SMS function interface as shown below:

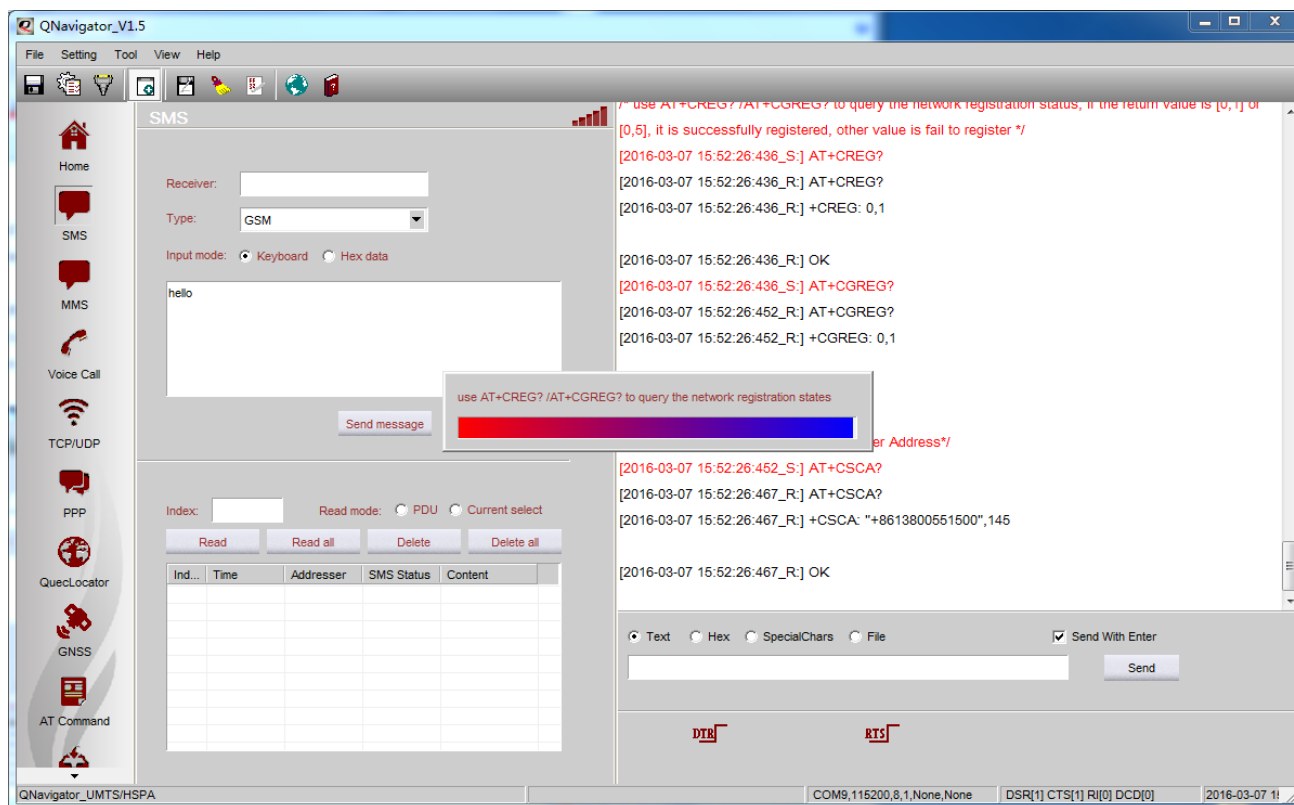


Figure 15: Switch View

If the network status is abnormal, “**Send message**” button will be unavailable. You should check the network status, the SMS settings or the CSCA number.

To read all SMS messages, click “**Read all**” button, as shown in the following figure:

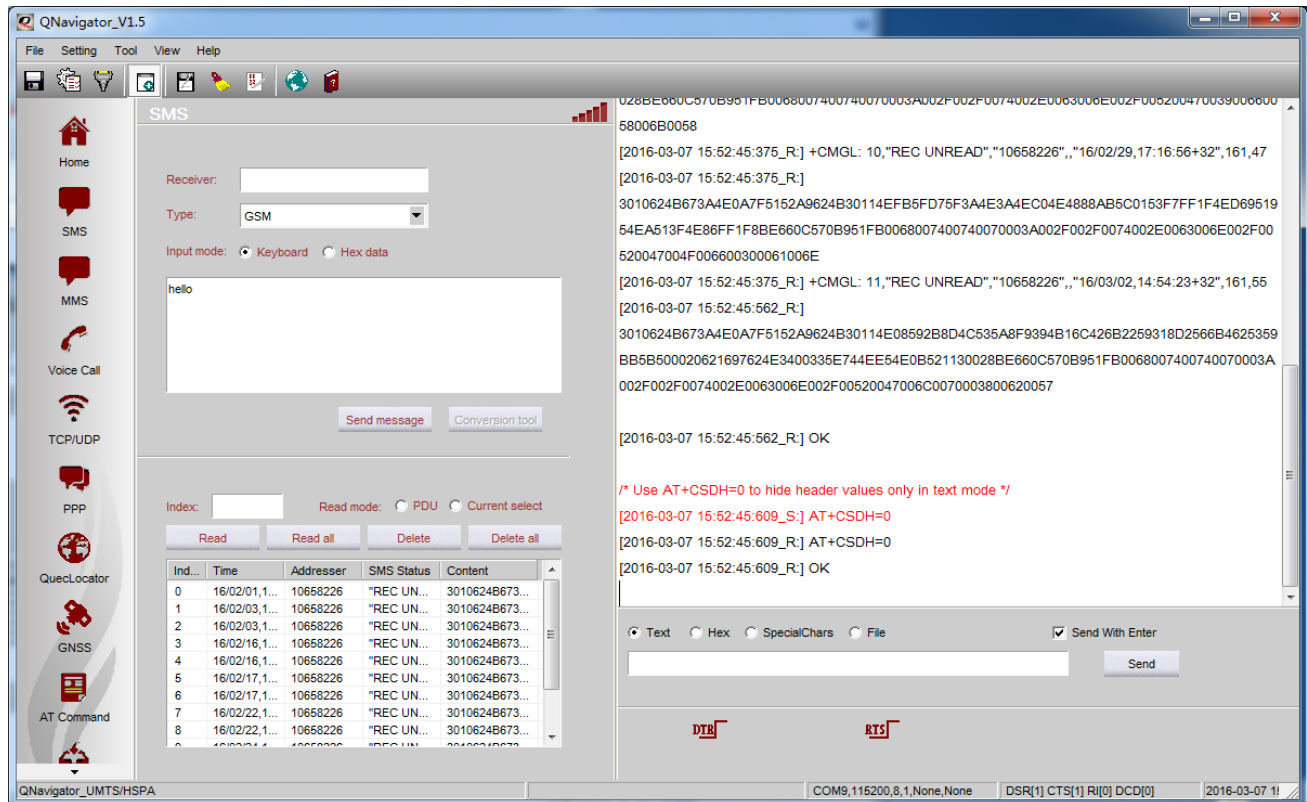


Figure 16: SMS-Read All

The data area displays the corresponding comments of each operation step.

Table 4: Functions of SMS

Read a Message	Select an existing SMS in the list or input the index of a message, then click “ Read ” button
Read all Messages	Read all messages (click “ Read all ” button)
Delete a Message	Select an existing SMS in the list or input the index of a message, then click “ Delete ” button
Delete all Messages	Delete all messages (click “ Delete all ” button)

There are two read modes: PDU (default) and Current Select. You can choose any of the modes that you want by selecting the corresponding option. The current selected mode depends on the type of selected mode.

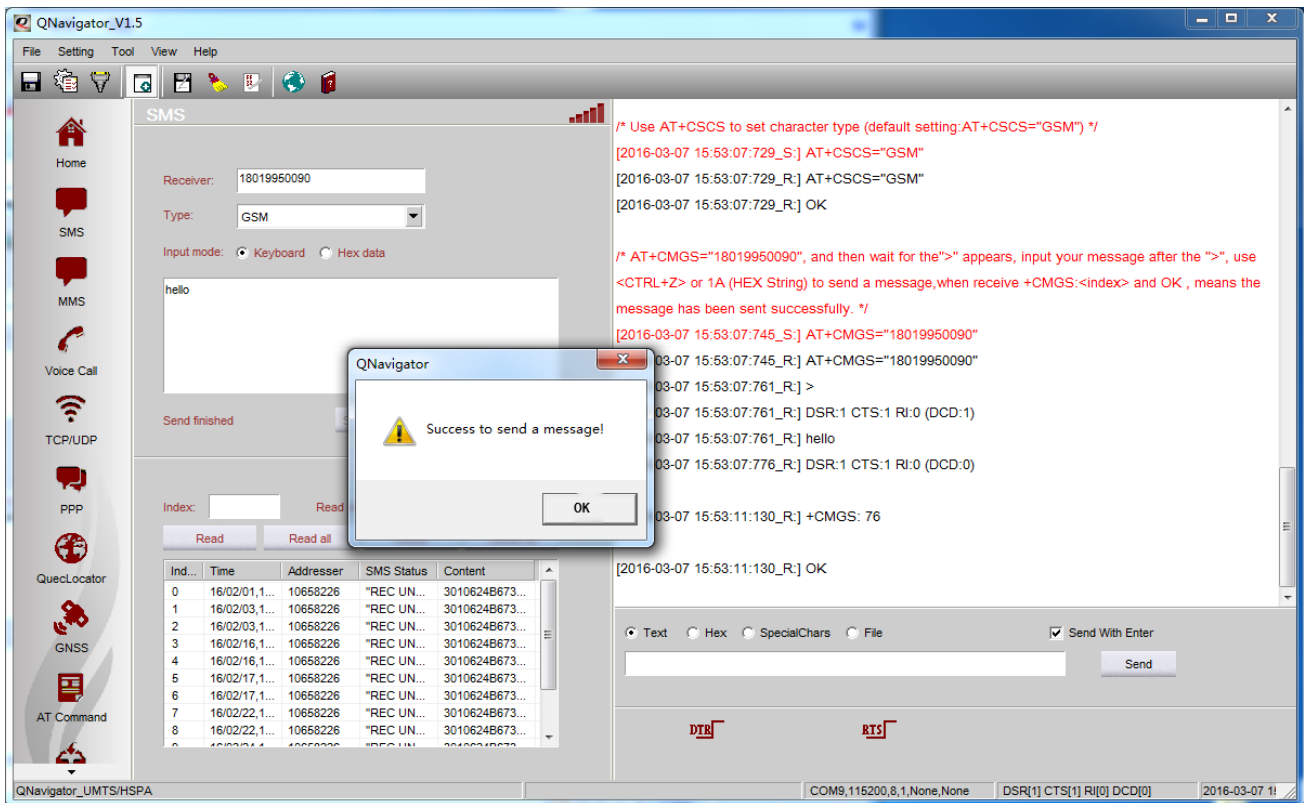


Figure 17: SMS-Send Message

The upper display area shows the steps to send a message.

4.3. Voice Call

Voice Call function is used to dial or answer a call, and set related audio parameters, as shown below.

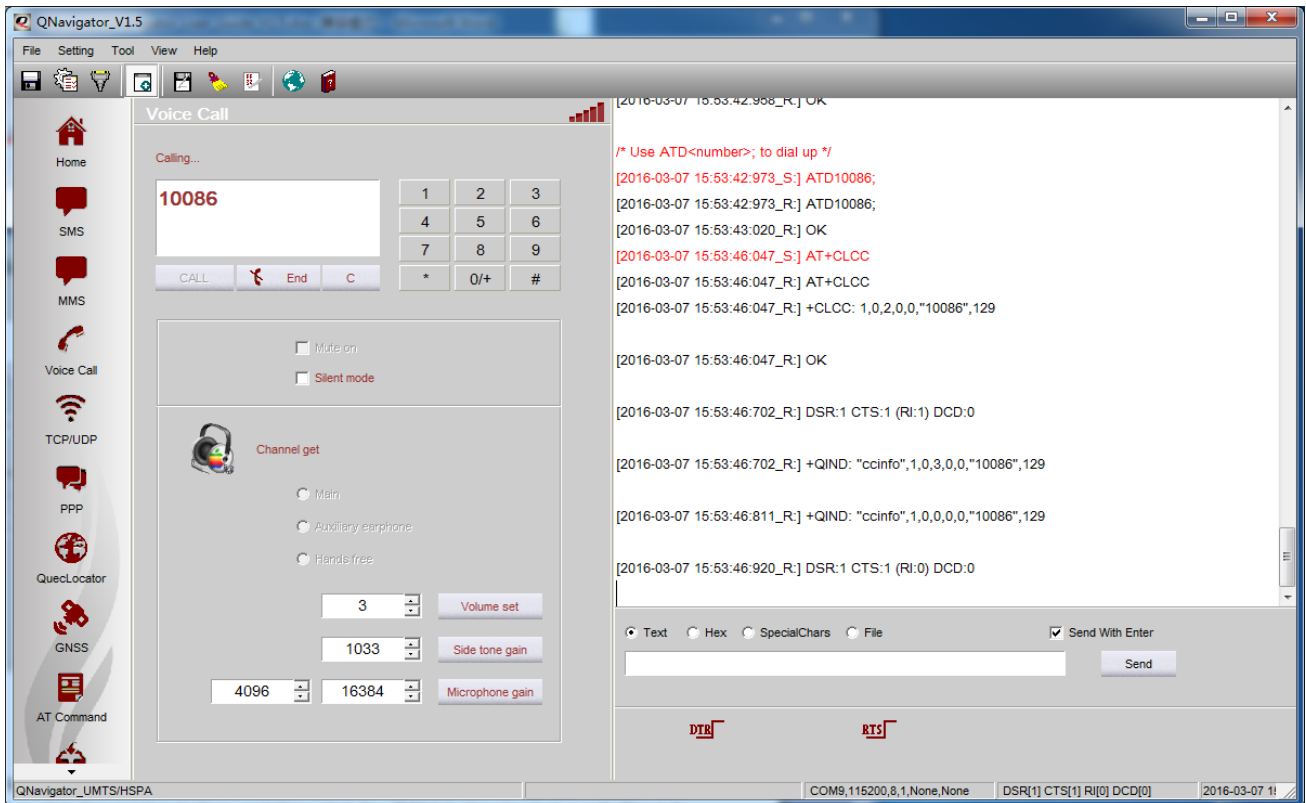


Figure 18: MO Call

Take calling China Mobile's customer service phone 10086 as an example. You can input the phone number by keyboard or click the number button, and then click the **"CALL"** button to start a call. The talk time will be displayed at the top area of the phone number. The data area shows the operation process of AT commands. (It will auto send **AT+CLCC** to check the call status). If you want to dial extension number, you only need to continuously click the number button.

At the end of the call, the program will automatically end operation process, and you can also use **"End"** button to hang up the call.

When a call comes in, **RING** message will be displayed in the data area and the button **"CALL"** and **"End"** will automatically change to **"Answer"** and **"Decline"**; you can answer the phone by clicking the button **"Answer"**, as shown below:

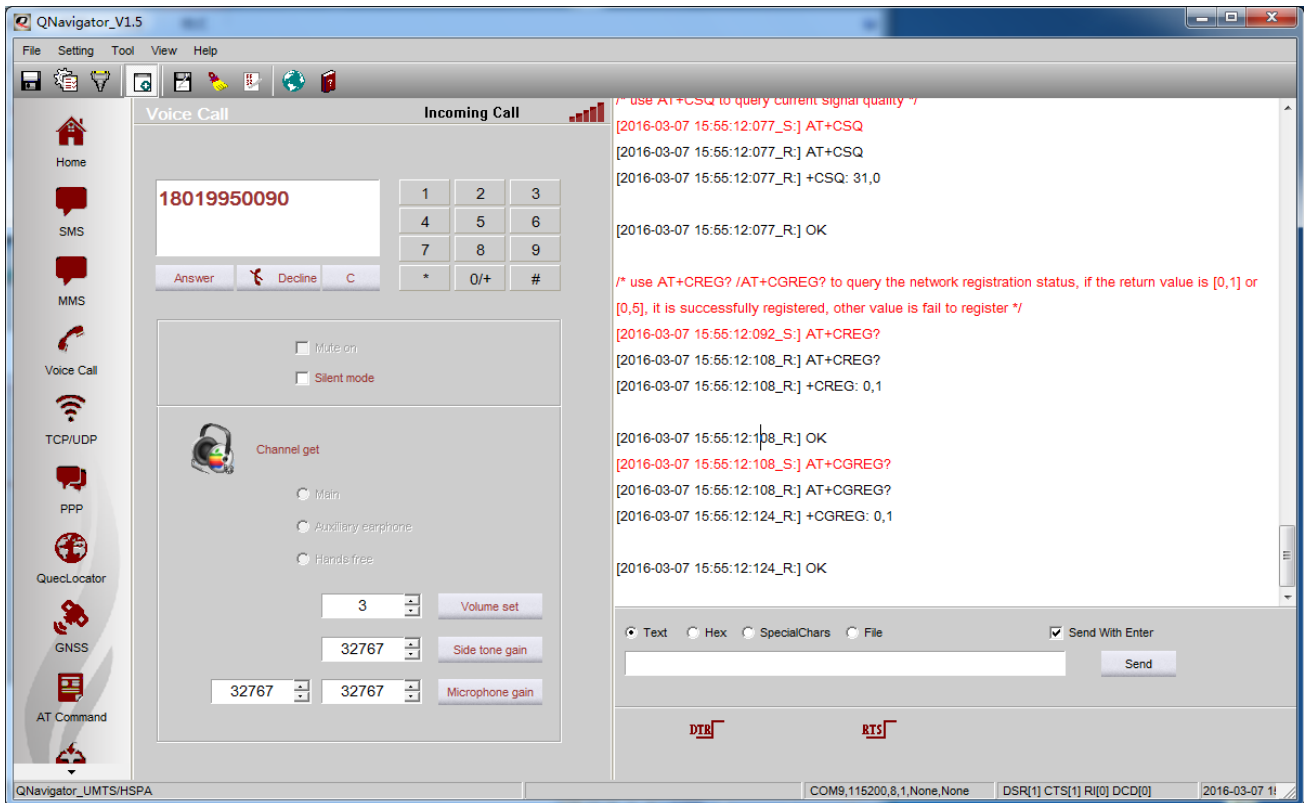


Figure 19: MT Call

4.4. TCP/UDP

TCP/UDP function is used to establish connections between TCP and UDP. After a connection between TCP and UDP is established successfully, data can be transferred between the server and the module, as shown below:

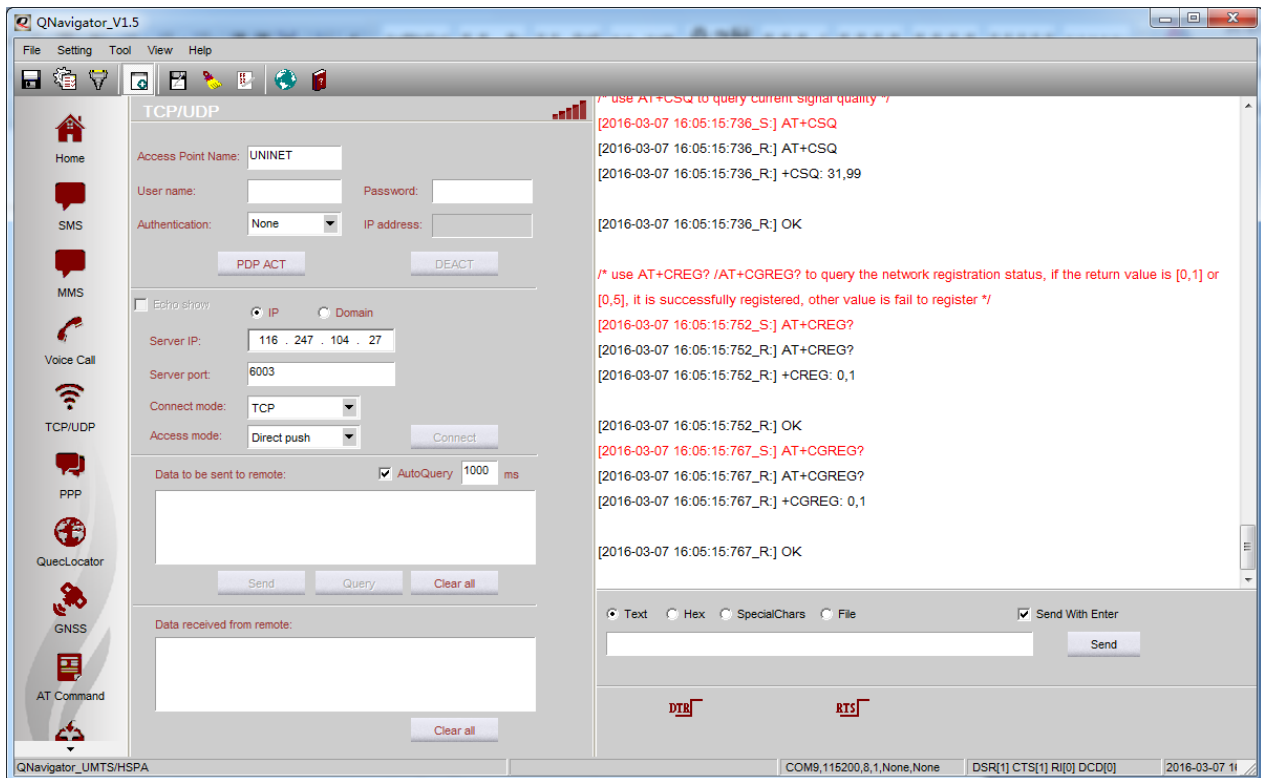


Figure 20: TCP/UDP-PDP ACT

- Step 1:** Activate the PDP (click the “**PDP ACT**” button).
- Step 2:** Click the “**Connect**” button after activating PDP successfully.
- Step 3:** Send data to server by clicking the “**Send**” button.

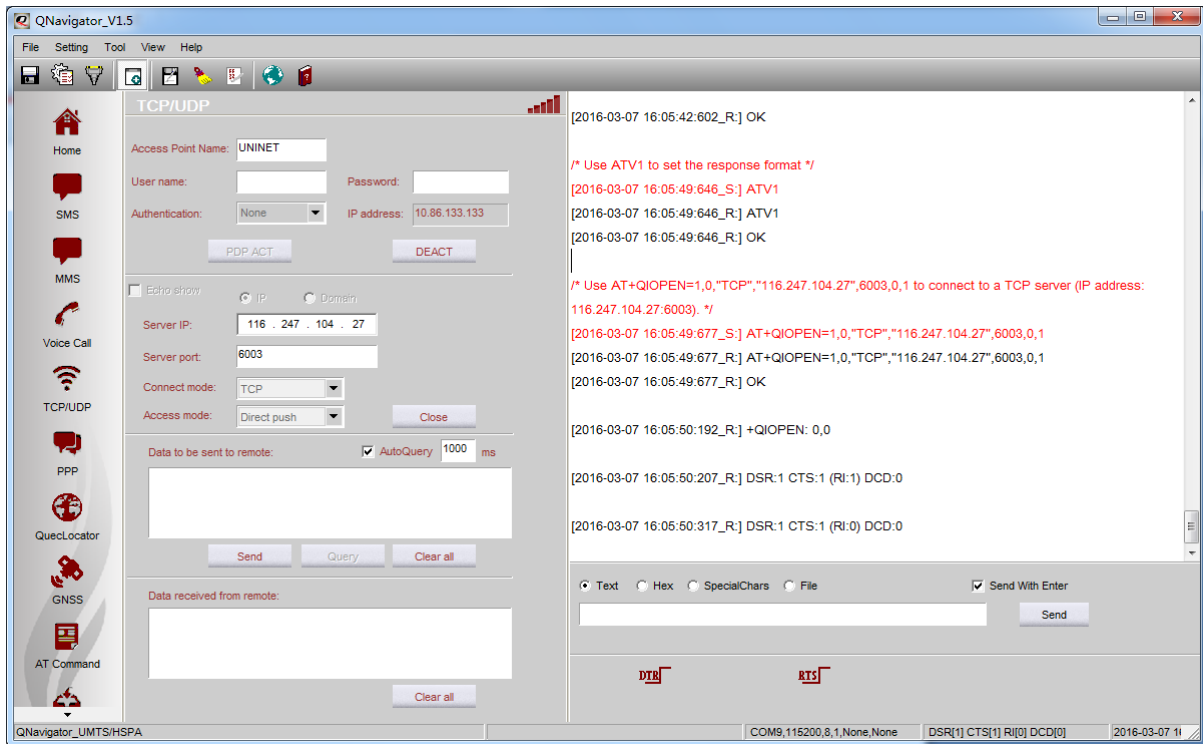


Figure 21: TCP/UDP-Connect

The detailed operation after connection is shown as below:

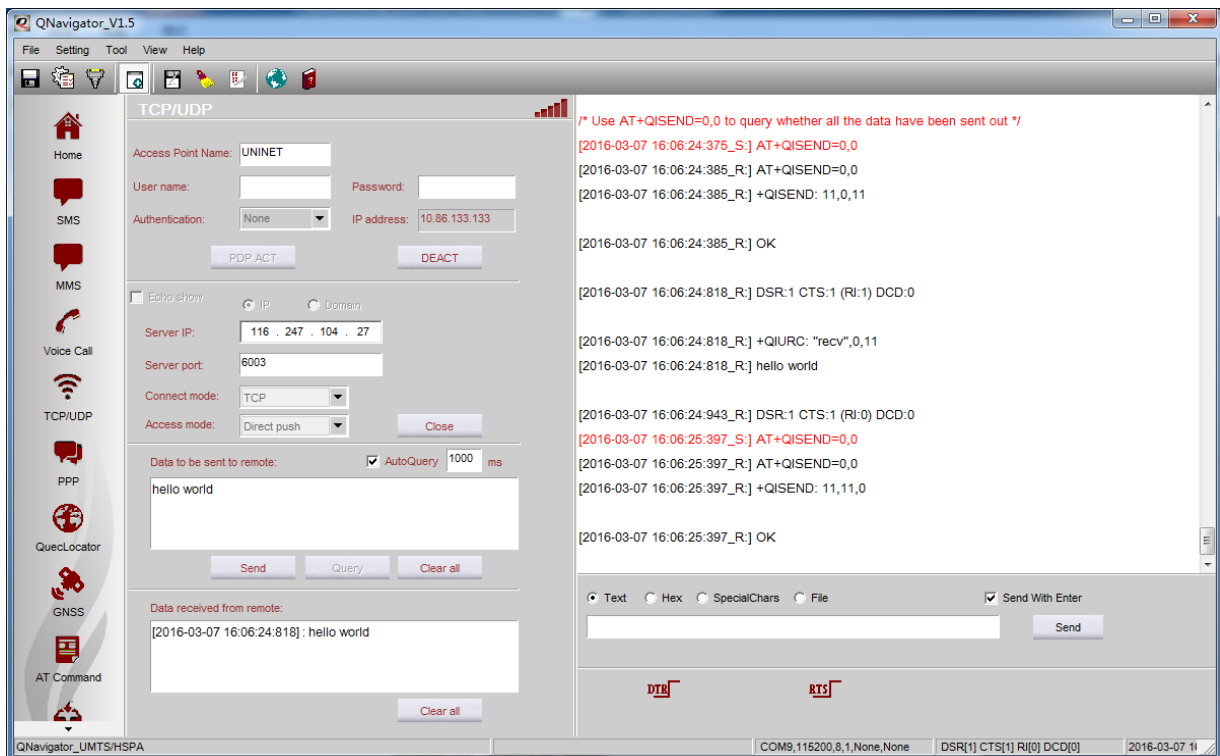


Figure 22: TCP/UDP-Send

It is not allowed to switch to another page or exit from the program without clicking “DEACT”.

4.5. PPP

PPP test page provides a PPP dial-up test as shown below:

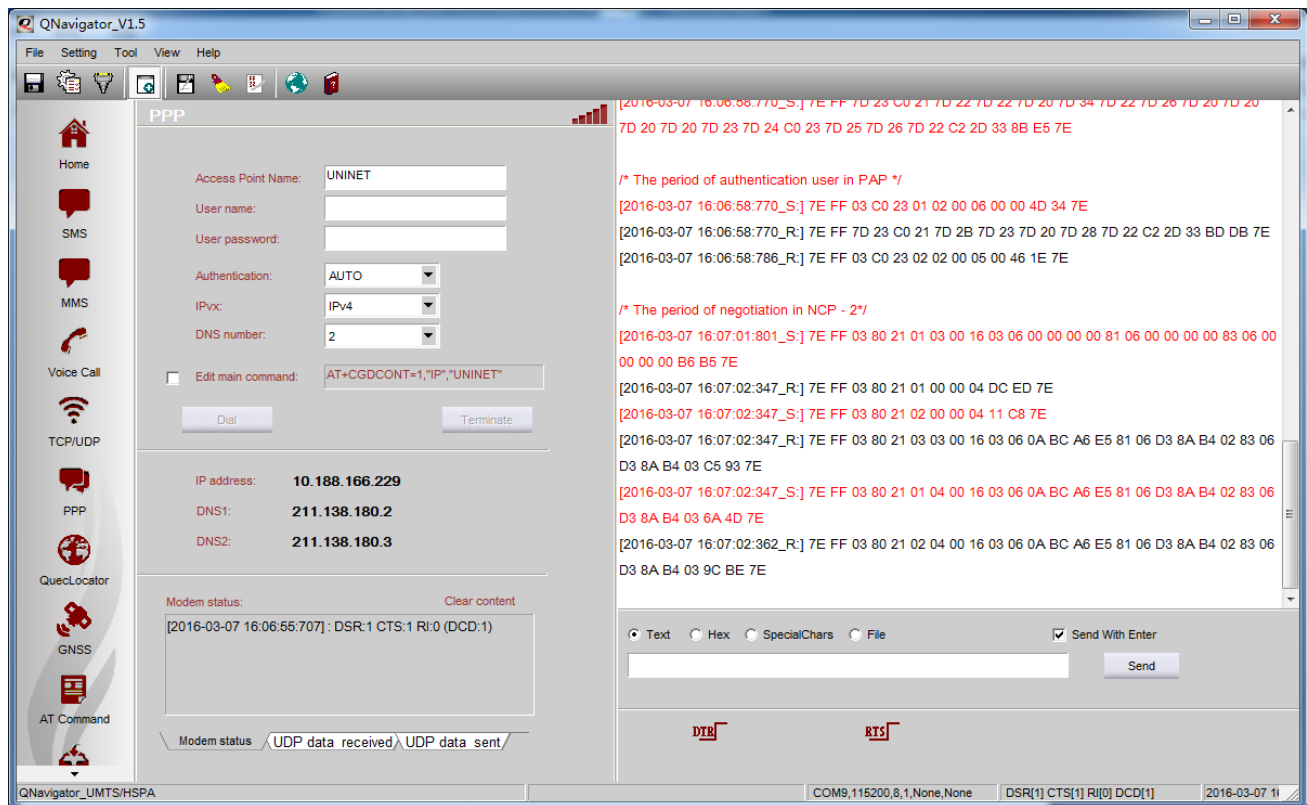


Figure 23: PPP-DIAL

About the number of negotiated DNS, you can choose it from 0 to 2. Click the “Dial” button to dial. Negotiated IP address and DNS will be displayed after successful dial-up. In the process of PPP dialing, a click of the “Stop” button can cancel the PPP dialing. After PPP dial is succeeded, click the “Terminate” button to disconnect the dial, as shown below:

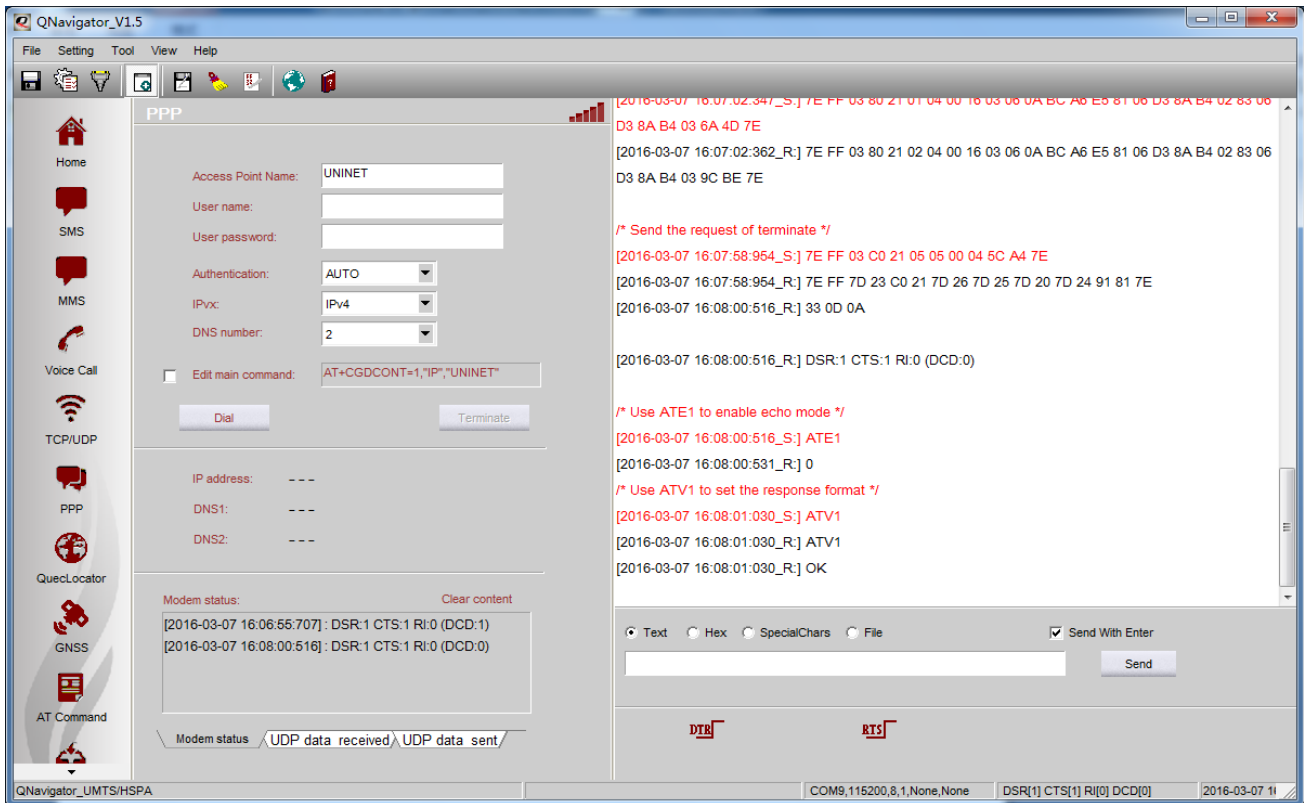


Figure 24: PPP-Terminate

After PPP dial is succeeded, you can not go to any other pages until you terminate the PPP dialing.

4.6. QuecLocator

QuecLocator allows Quectel wireless modules to provide positioning service to the cell base stations nearby the position you want to fix. You can get the current position and show it in the map. Before that, you must set an APN and activate the PDP environment by clicking **“PDP ACT”** button. The demonstration of getting position is shown as below:

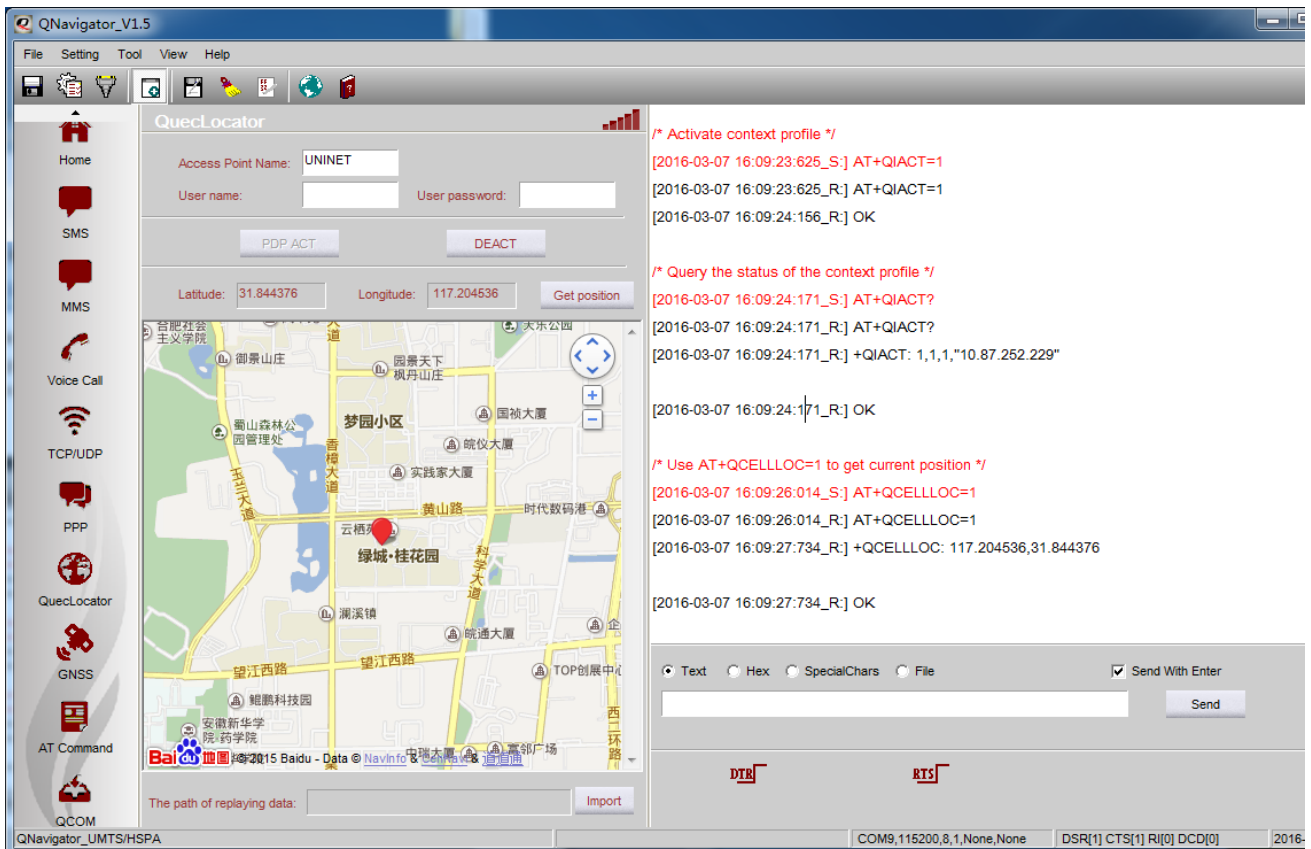


Figure 25: Show in Map

4.7. GNSS

GNSS provides a graphical presentation of satellite positioning information retrieved from the module.

Open USB NMEA port (NMEA port is the default port and you can change the port by **AT+QGPSCFG="OUTPUT"**) first. Choose the port number, and then click **"Connect"**. The module will not report the location information automatically even after the NMEA port is opened. You must send **AT+QGPS=1** on the AT port. If you have selected the **"Auto start/stop GNSS"** here, **AT+QGPS=1** will be sent automatically from the AT port which is connected to the HOME page after clicking **"Connect"**.

When the module has reported the location information, the system will automatically parse and classify the location result, and demonstrate them graphically. The module will only report the GPS location information by default. You can send **AT+QGPSCFG="GLONASSENABLE"** on the AT port to let the module report GPS and GLONASS location information simultaneously. The main interface shows the current location of the module, such as latitude, longitude, and so on. You can query the map location, satellite azimuth and elevation angle, histogram of satellite signal and original NMEA data, etc. by switching the tabs on the bottom, shown as below:

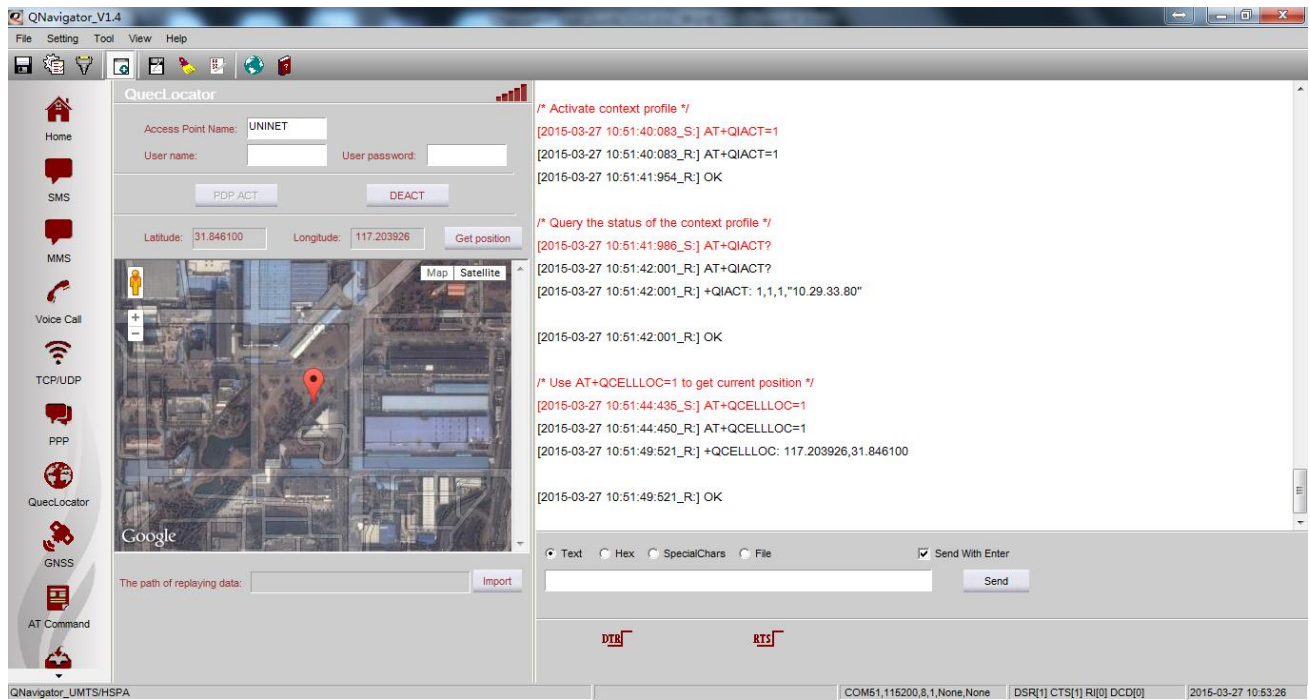


Figure 26: Show in Map

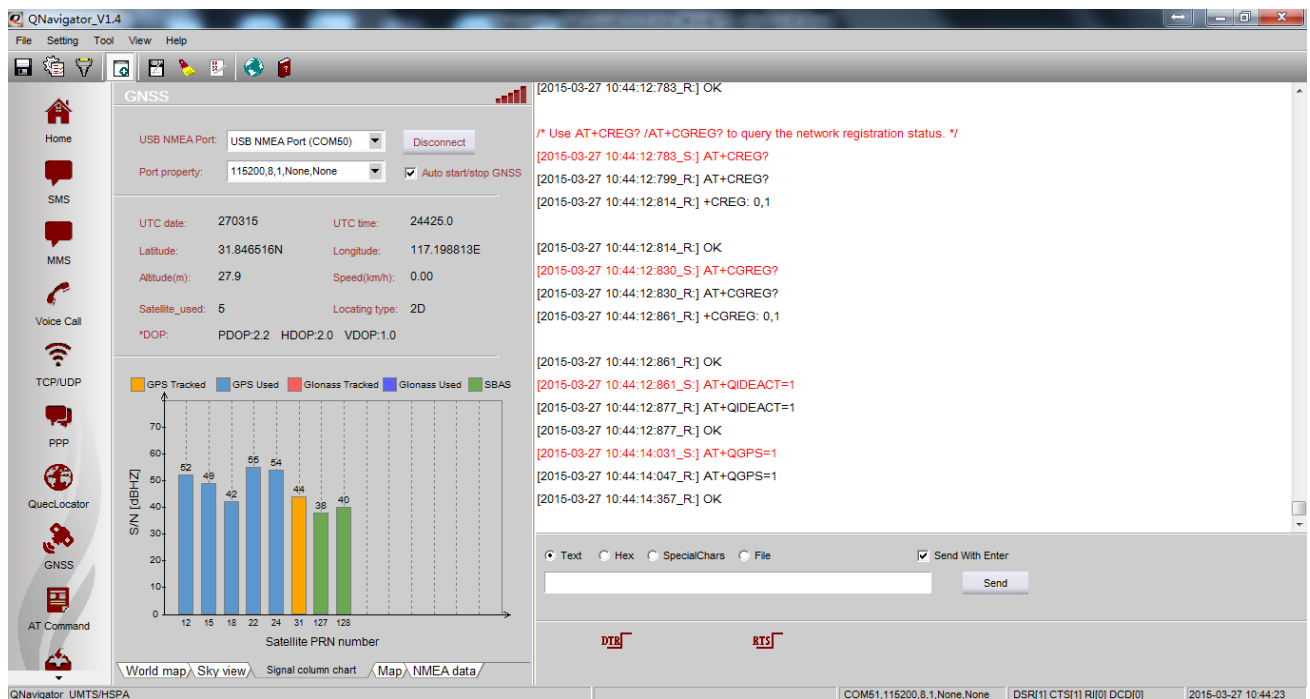


Figure 27: Satellite Signal State

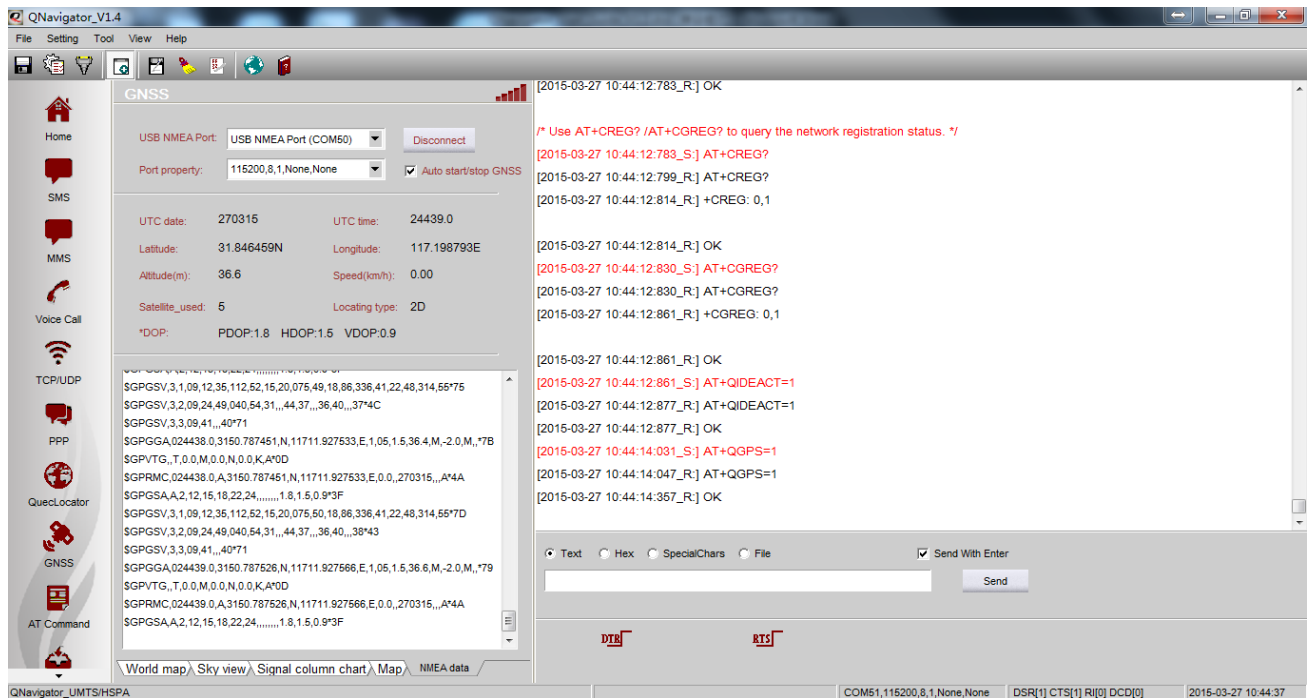


Figure 28: Show NMEA Data

NOTE

GNSS functions are supported differently by different modules and tool versions, and please contact Quectel Technical Support for details.

4.8. AT Command

AT Command function provides AT commands for user to query, test and learn, as shown below.

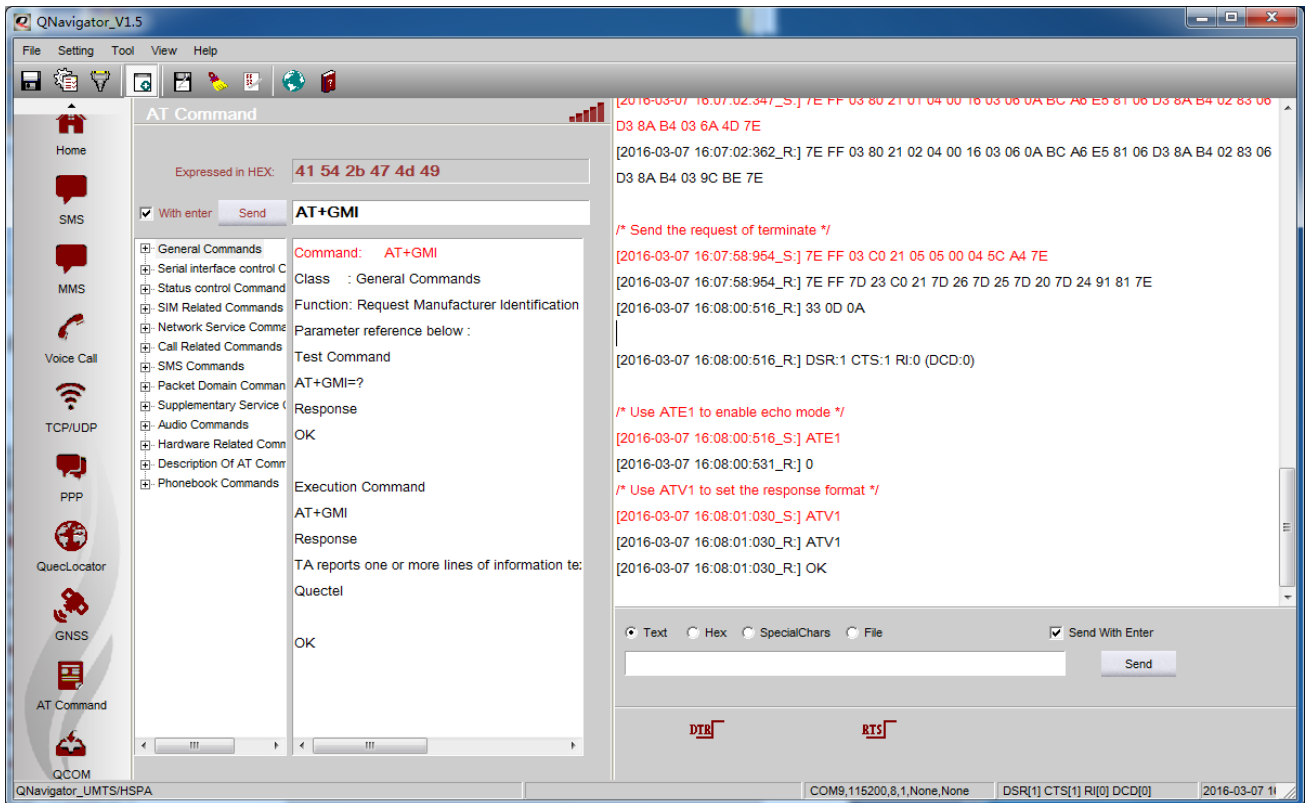


Figure 29: AT Command-1

Input the keywords in the “**Send**” column to query AT commands. The results including the keywords will be displayed. You can drag the dividing strip to see the complete details of these AT commands, as shown below:

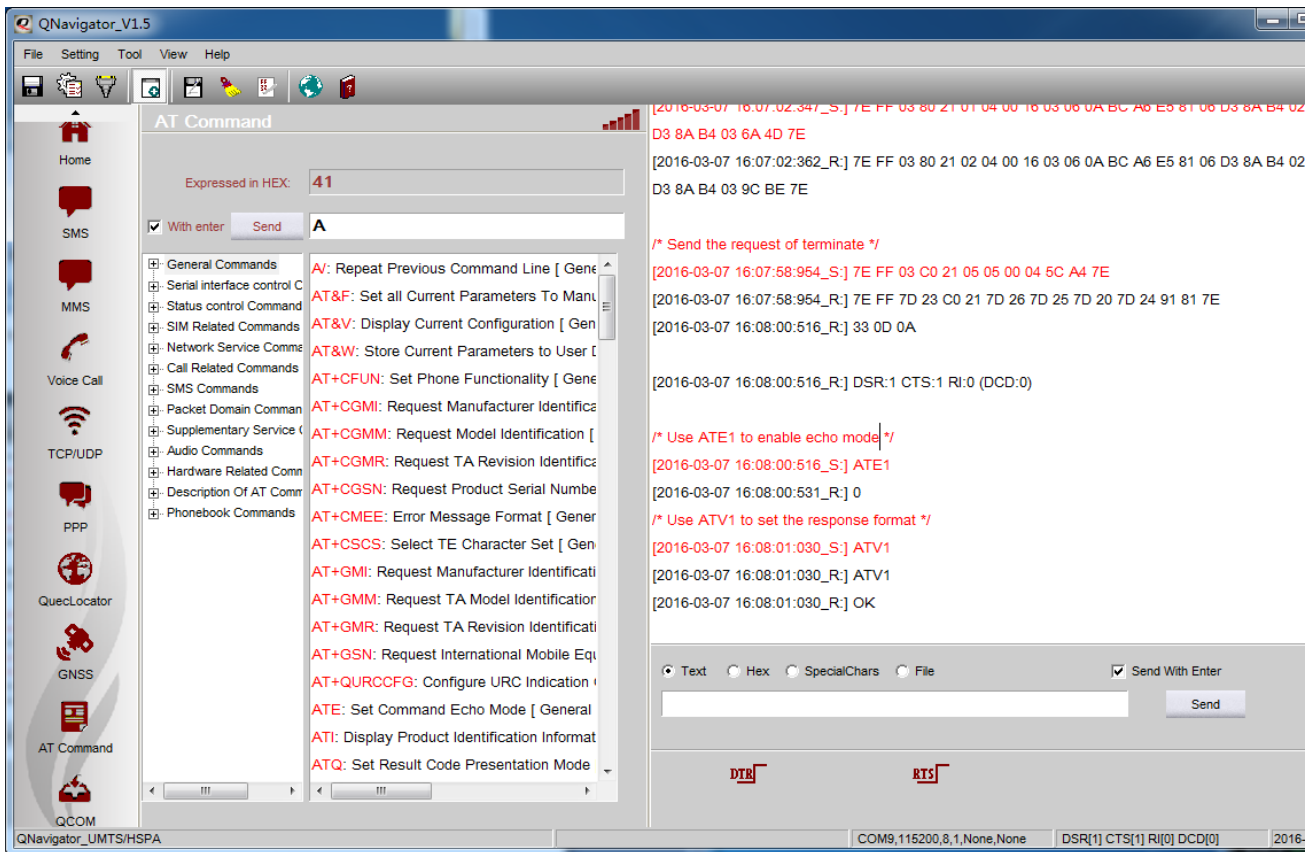


Figure 30: AT Command-2

If the query returns only one result, all the information will be displayed, as shown below:

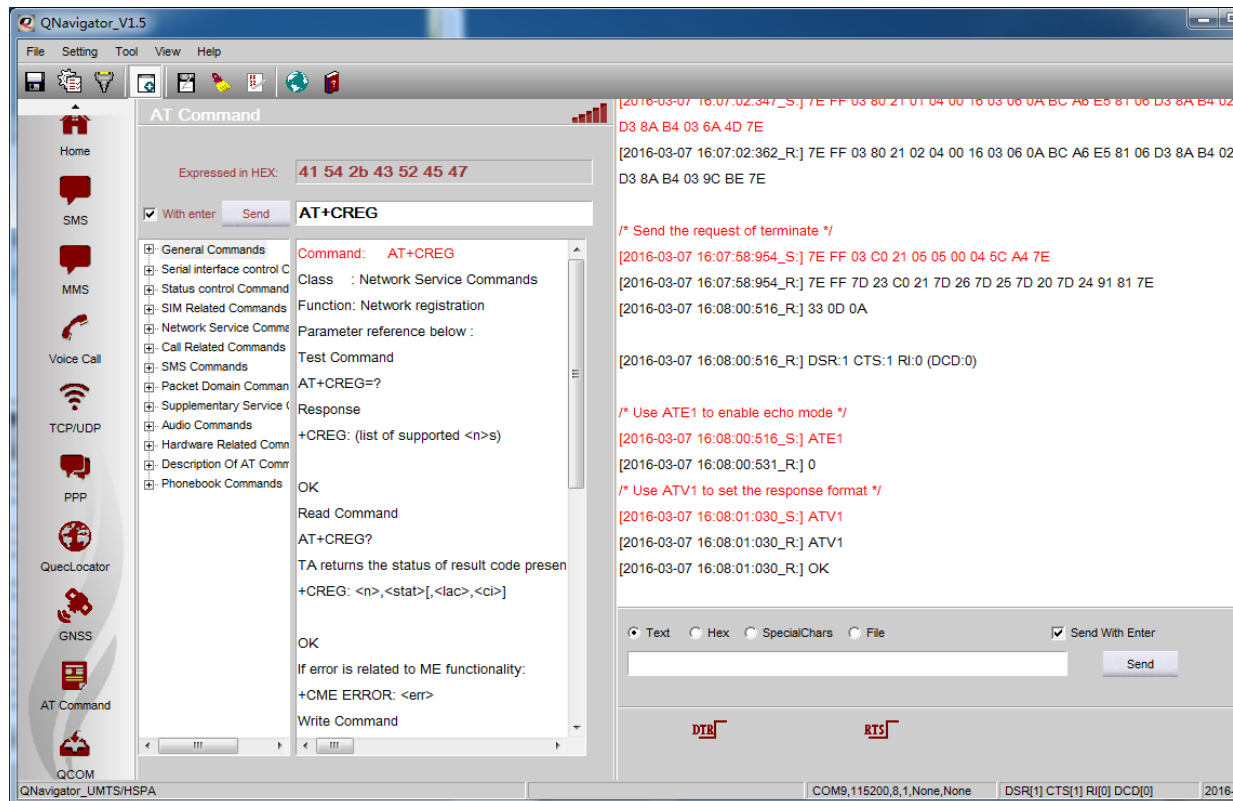


Figure 31: AT Command-3

At this time, if the UART is successfully opened, you can click the “Send” button and all information about this command will be displayed, as shown below:

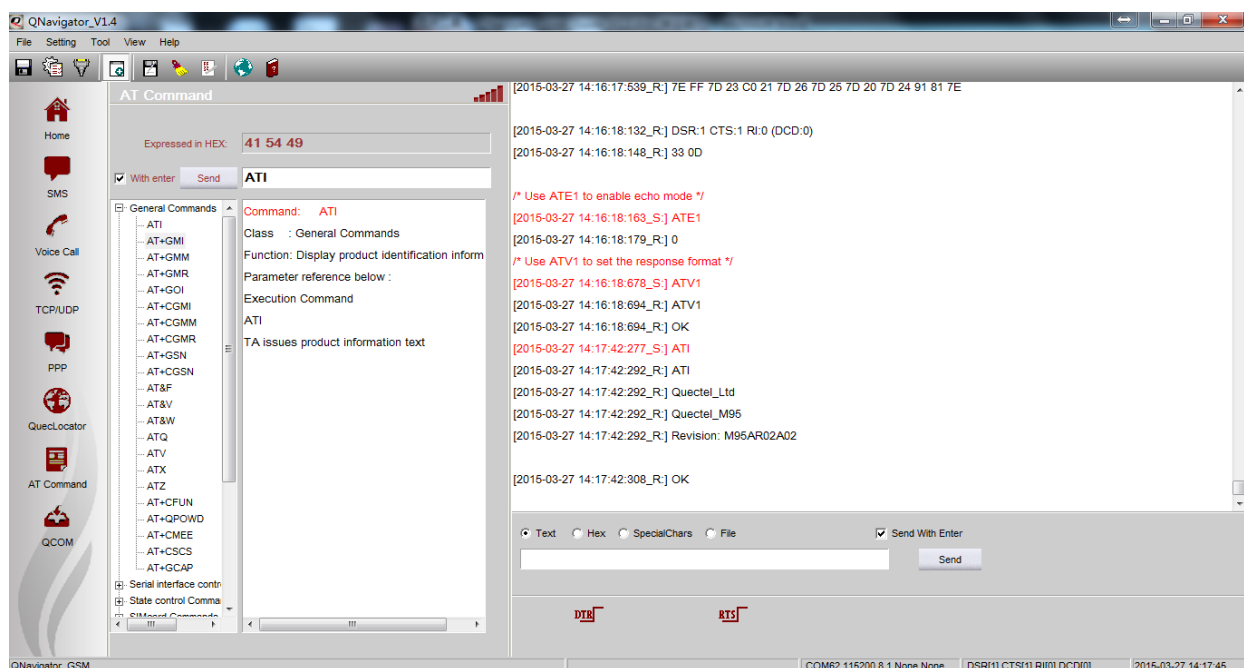


Figure 32: AT Command-4

4.9. QCOM

AT command's pressure testing can be performed under the QCOM test page, as shown below:

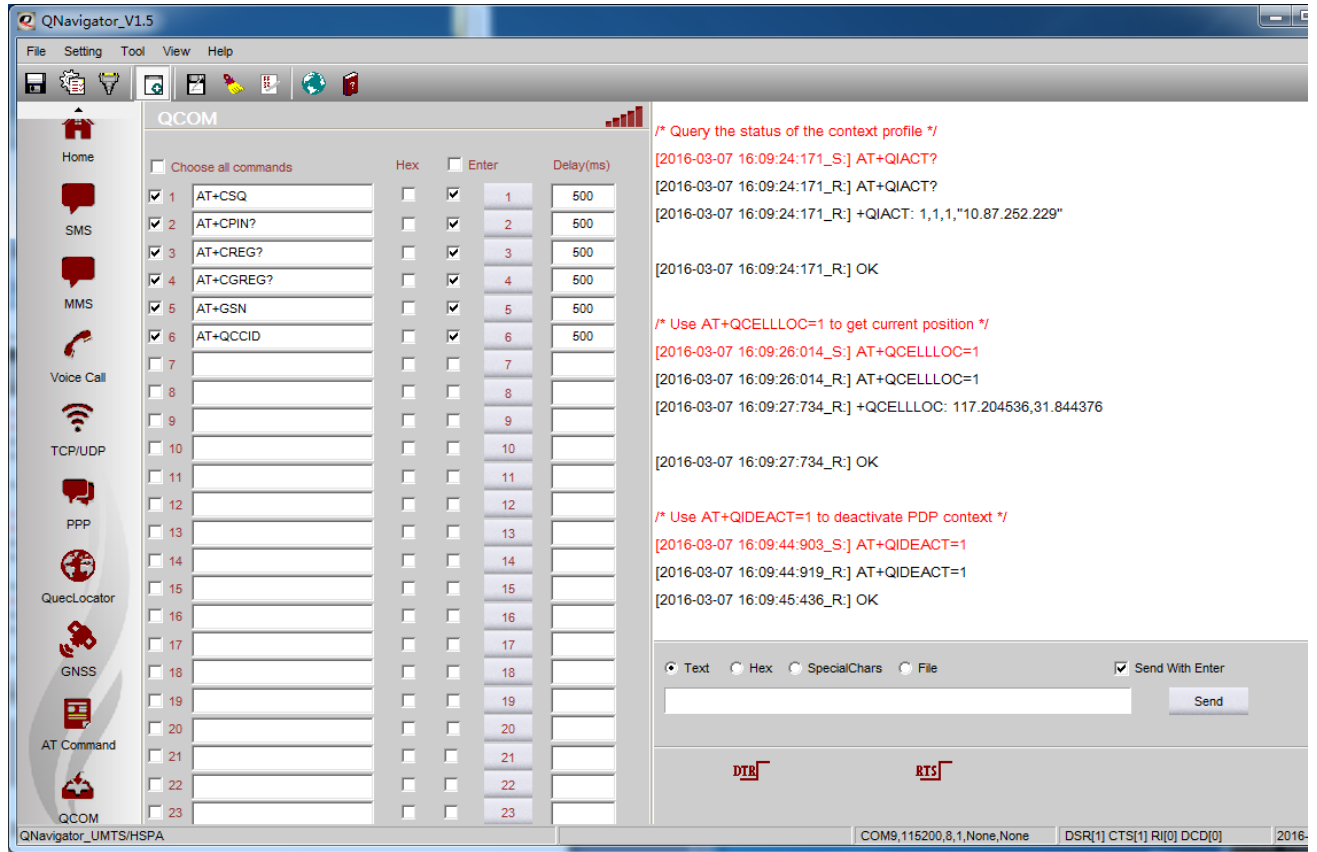



Figure 33: QCOM Test Page

5 Auxiliary Tools

5.1. Manually Send Data to UART

In the process of pressure testing, click , you can send AT command manually, as shown below:

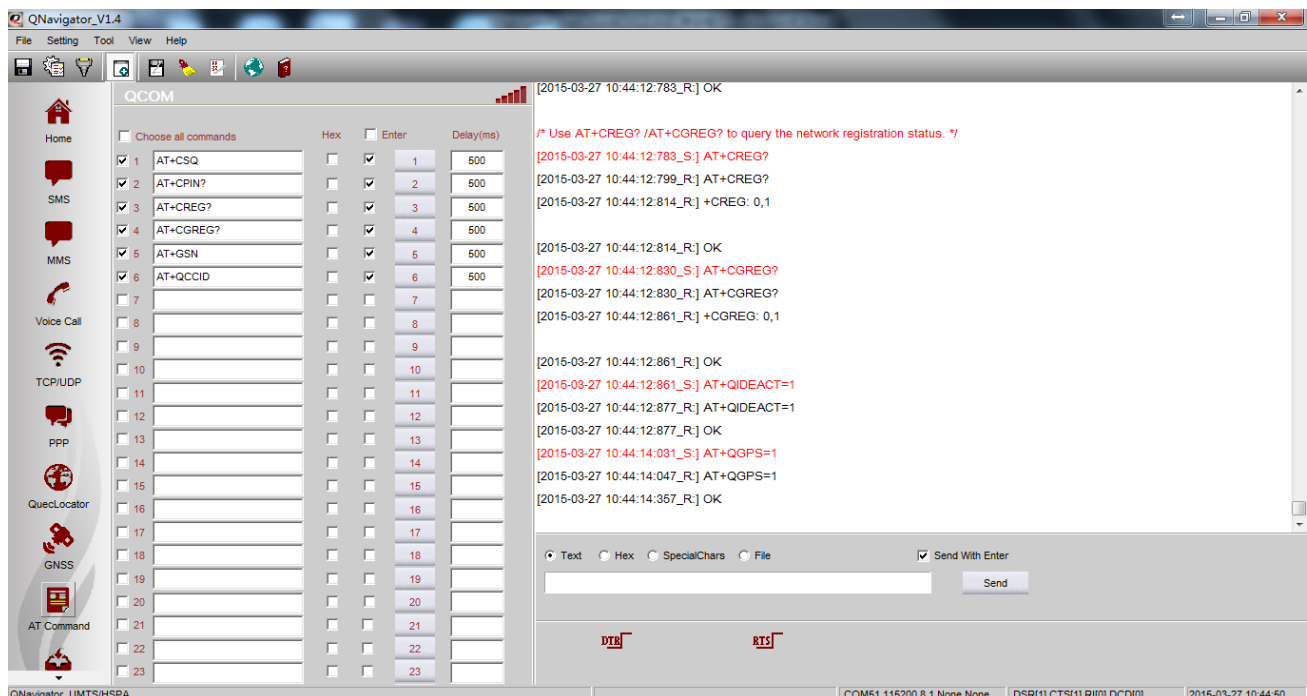


Figure 34: Hand Control

AT commands can be sent in Text and Hex modes. Enter an AT command in the text box which is on the right of “**Content**”. When you double-click this text box, a dialog box would pop up, in which the same AT commands are shown in a list. You can add a new command in the list, or modify or delete a selected command. Also you can copy a command to the text box of the parent window by double-clicking the corresponding row in the list. The AT commands dialog box is shown as below:

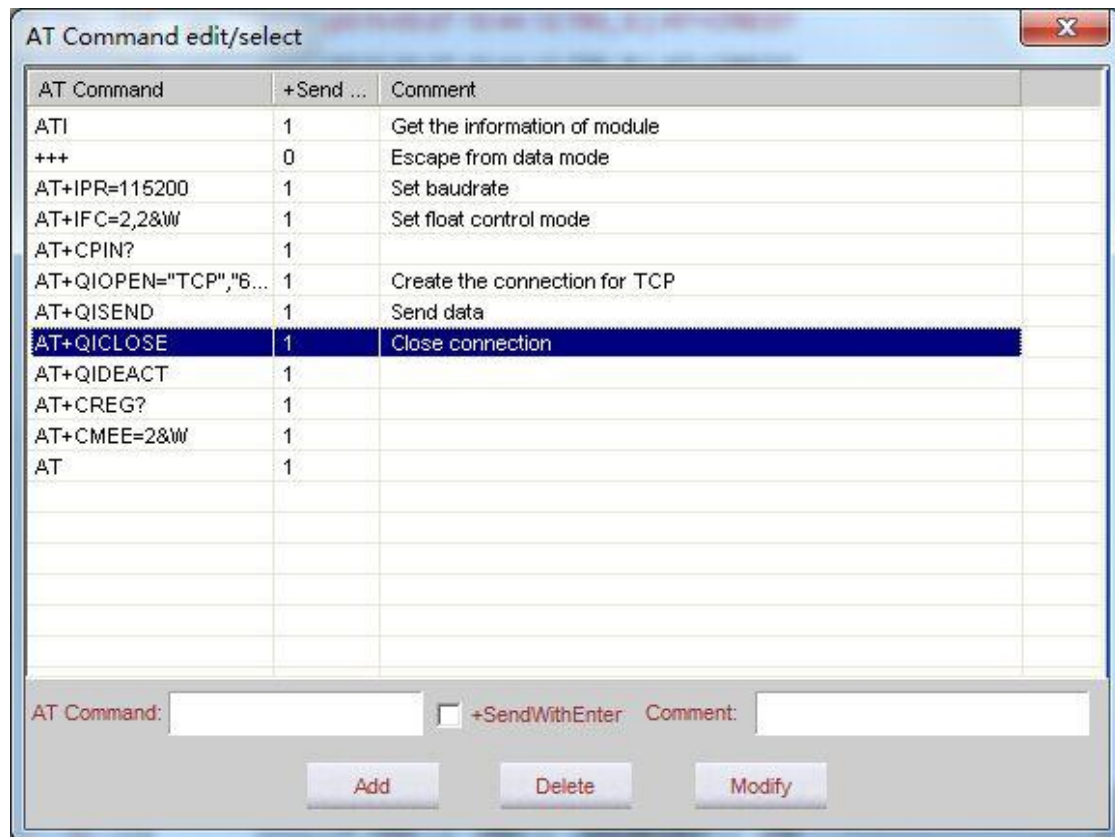


Figure 35: Hand Control-AT Command Edit/Select

Special characters can be sent in "SpecialChars" page and the file operation can be executed in "File" page.

6 Appendix References

Table 5: Terms and Abbreviations

Abbreviation	Description
ASCII	American Standard Code for Information Interchange
APN	Access Point Name
DNS	Domain Name Server
GLONASS	Global Navigation Satellite System (Russia)
GNSS	Global Navigation Satellite System
GPS	Global Positioning System
GSM	Global System for Mobile Communications
HSPA	High Speed Packet Access
IP	Internet Protocol
LTE	Long Term Evolution
NMEA	NMEA (National Marine Electronics Association) 0183 Interface Standard
OS	Operating System
PC	Personal Computer
PDU	Protocol Data Unit
PPP	Point-to-Point Protocol
SIM	Subscriber Identity Module
SMS	Short Message Service
TCP	Transmission Control Protocol
UART	Universal Asynchronous Receiver/Transmitter

UDP	User Datagram Protocol
UMTS	Universal Mobile Telecommunications System
USB	Universal Serial Bus